

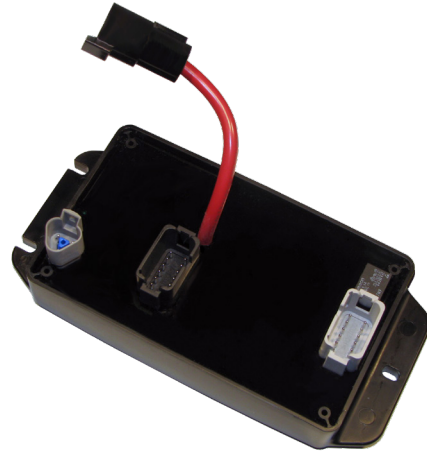


# ioBLOC 100A Output Module

10 channel PWM output module designed for extreme heavy duty applications

## Key Features

- For 12 or 24V nominal systems
- 10 Output Channels
  - 8 x 15A (Outputs 1-8)
  - 2 x 10A (Outputs 9-10)
- Short circuit and overcurrent protection
- Open load detection (when diagnostics enabled)
- Programmable overcurrent limit
- 250kbps baud rate (with J1939 protocol)
- IP67 rated with properly mated connectors
- Independent frequency and duty cycle



## Unit Connections

### 3 Pin Deutsch (SAE J1939)

Communication Protocol	SAE J1939
Connector	DT04-3P
Mate Connector	DT06-3S
Mate Contact	0462-201-16141
Mate Wedge Lock	W3S-1939

### 1 Pin Deutsch (Power)

Connector	DTHD04-1-4P
Mate Connector	DTHD06-1-4S
Mate Contact	0462-203-04141

### 12 Pin Deutsch (Outputs 1-6)

Connector	DTF15-12PA
Mate Connector	DT06-12SA
Mate Contact	0462-201-16141
Mate Wedge Lock	W12S

### 12 Pin Deutsch (Outputs 7-10)

Connector	DTF15-12PB
Mate Connector	DT06-12SB
Mate Contact	0462-201-16141
Mate Wedge Lock	W12S

## Electrical Specifications

Power Supply Voltage	8 - 32 VDC
Output Current	10 - 15A
Total Module Current	100A Max

## Environmental Specifications

Storage Temperature	-40° to 85° C
Operating Temperature	-40° to 85° C
IP Rating	IP67
Weight	1.70 lbs.

## Part Number

ioBLOC 100A Output Module	PN 100000798
---------------------------	--------------